

ROCK

BITUMINOUS COAL is a relatively soft coal containing the tarlike substance bitumen. It is of higher quality than lignite coal but of poorer quality than anthracite, and is an organic sedimentary rock usually formed by the result of high pressure being exerted on lignite.



REPTILE

The TIMBER RATTLESNAKE is a species of venomous pit viper and is the only rattlesnake species in most of the northeastern U.S.



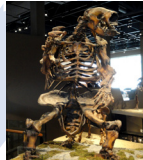
AMPHIBIAN

The NORTHERN RED SALAMANDER, or PSEUDOTRITON RUBER, has a color pattern that showcases the autumn colors of our state sugar maple tree and the coal mines that dot our region. Five toes on each back foot and four toes on each front foot represent the 55 counties and eight major rivers of West Virginia.



FOSSIL

The MEGALONYX JEFFERSONII is the remains of an extinct species of ground sloth that stood more than eight feet tall and weighed more than 1,000 pounds. During the Ice Age, it inhabited woodlands, knocking over trees and digging up vegetation with its giant claws.



LOCOMOTIVE

The legendary Shay No. 5 was built for the Greenbrier and Elk River Railroad. This turn-of-the-century, class C-80 Shay has been toiling up Cheat Mountain since 1905, making it one of the oldest engines in continuous service on its original line, and the second oldest Shay in existence. Named as a tribute to the history of timbering in West Virginia.



Sources: WV Division of Culture and History, wikipedia.org, wvcommerce.org, WV Geological and Economic Survey, WV Blue Book and e-WV: The West Virginia Encyclopedia

Scan QR code with tablet or smart phone

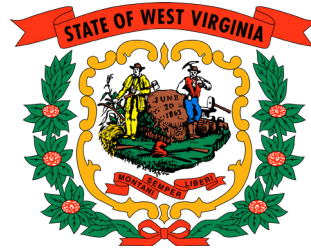


www.MH3WV.org

"The One Stop Start for West Virginia Studies and the Golden Horseshoe"

West Virginia

Official Symbols



FLAG

Prominently displayed on a pure white field and emblazoned in proper colors is a Coat of Arms, the bottom and sides wreathed by Rhododendron. Above, on a ribbon, is the constitutional designation "State of West Virginia." The white field is bordered on all sides by a strip of blue. For parade purposes, all but the staff side are to be trimmed with gold fringe.

DAY

President Abraham Lincoln proclaimed West Virginia as the 35th State on April 20, 1863, becoming effective 60 days later on June 20, 1863.

JUNE 20th

SONGS

- "THE WEST VIRGINIA HILLS"
- "THIS IS MY WEST VIRGINIA"
- "WEST VIRGINIA, MY HOME SWEET HOME"
- "TAKE ME HOME, COUNTRY ROADS (ALMOST HEAVEN, WEST VIRGINIA)"

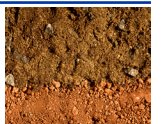
COLORS

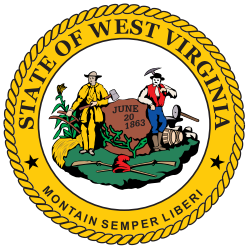
OLD GOLD and BLUE



SOIL

MONONGAHELA SILT LOAM is a productive agricultural soil that is found on more than 100,000 acres in 45 counties in WV.





THE GREAT SEAL (OBSERVE)

...of West Virginia, which also is the Coat of Arms, symbolizes the principal pursuits and resources of West Virginia. The obverse side bears the legend "State of West Virginia," together with the motto, *Montani Semper Liberi*, "Mountaineers Are Always Free." A farmer and a miner stand on either side of a large, ivy-draped rock which bears the date of West Virginia's admission to the Union. On the ground in front, a Phrygian Cap, or "Cap of Liberty," rests on crossed hunters' rifles.

THE GREAT SEAL (REVERSE)

The reverse is encircled by a wreath of laurel and oak leaves. A wooded mountain is on the right; a slope with a log farmhouse is on the left. On the side of the mountain is an illustration of the Tray Run Viaduct with a train passing over it. A factory, a river with boats, a derrick, a shed, and a meadow with sheep and cattle show many leading characteristics and products of the state. Above, the sun emerges from the clouds with the Latin phrase *Libertas E Fidelitate*, "Freedom and Loyalty."

TREE

The SUGAR MAPLE or ACER SACCHARUM has a five-lobed leaf and a small wing-shaped pod. It produces an excellent wood for furniture as well as maple syrup. A single tree is 70 to 120 feet high and produces two to three pounds of sugar when "sugared off."



BIRD

The CARDINAL or CARDINALI CARDINALI measures approximately eight inches long as an adult. The male is a rich scarlet with a mask and shading of black, while the young birds and females are less brilliant.



FISH

The BROOK TROUT is the state's only native trout and thrives in small, cold, spring-fed streams. It is olive with lighter sides and a reddish belly (in males) and is easily identified by the light-colored edges of the lower fins.



FRUIT

The GOLDEN DELICIOUS APPLE is a large, yellowish-green skinned cultivar, very sweet to the taste and a favorite for salads, apple sauce, and apple butter. Prone to bruising and shriveling, it needs careful handling and storage. It was discovered by Andrew Mullins in Clay County in 1905.



FIREARM

The HALL FLINTLOCK MODEL 1819 is a single-shot breech loading rifle designed by John Hancock Hall and adopted by the U.S. Army in 1819. It used a pivoting chamber breech design and was made with either flintlock or percussion cap ignition systems. It was manufactured in the 1820s and 1830s at the Harpers Ferry Arsenal.



TARTAN

The WEST VIRGINIA SHAWL is based on a design found at the DAR museum in Barboursville and contains various colors to represent different aspects of the state: Scarlet for the cardinal; Yellow for fall colors; Blue for rivers and lakes; Black for the black bear and the state's oil and coal resources; Green for the rhododendron and the state's meadows; Azure for the sky; White for all the colors of the United States.



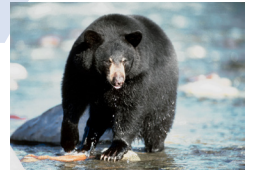
FLOWER

The RHODODENDRON MAXIMUM or BIG LAUREL is a shrub of the heath family with large evergreen leaves and delicate pale pink or white bloom, mottled with either red or yellow flecks.



ANIMAL

The BLACK BEAR or URSUS AMERICANUS is the only species of bear found in the state (primarily in the eastern mountain region.) While commonly referred to as the "black bear," its coloring is actually deeply tinted with brown. The adult reaches an average weight of 250 pounds.



BUTTERFLY

The MONARCH BUTTERFLY is orange and black, dines on milkweed as a caterpillar, sips nectar from flowers as a butterfly, and migrates south to Mexico for the winter. The butterflies you see in the spring are the great grandchildren of the ones that lived in Mexico during the winter.



INSECT

The HONEY BEE pollinates many of the state's important crops, including fruits, vegetables, and grasses, and provides a valuable product in its honey. It has six legs, four wings and its coloring ranges from dark yellow to gold with three dark bands on its abdomen.



GEM

SILICIFIED LITHOSTROTIONELLA- the skeletal material of this Mississippian-era fossil coral has been replaced by pink CHALCEDONY, a form of silica. It has a waxy luster, may be semitransparent or translucent, and is often cut and polished for jewelry and display.

