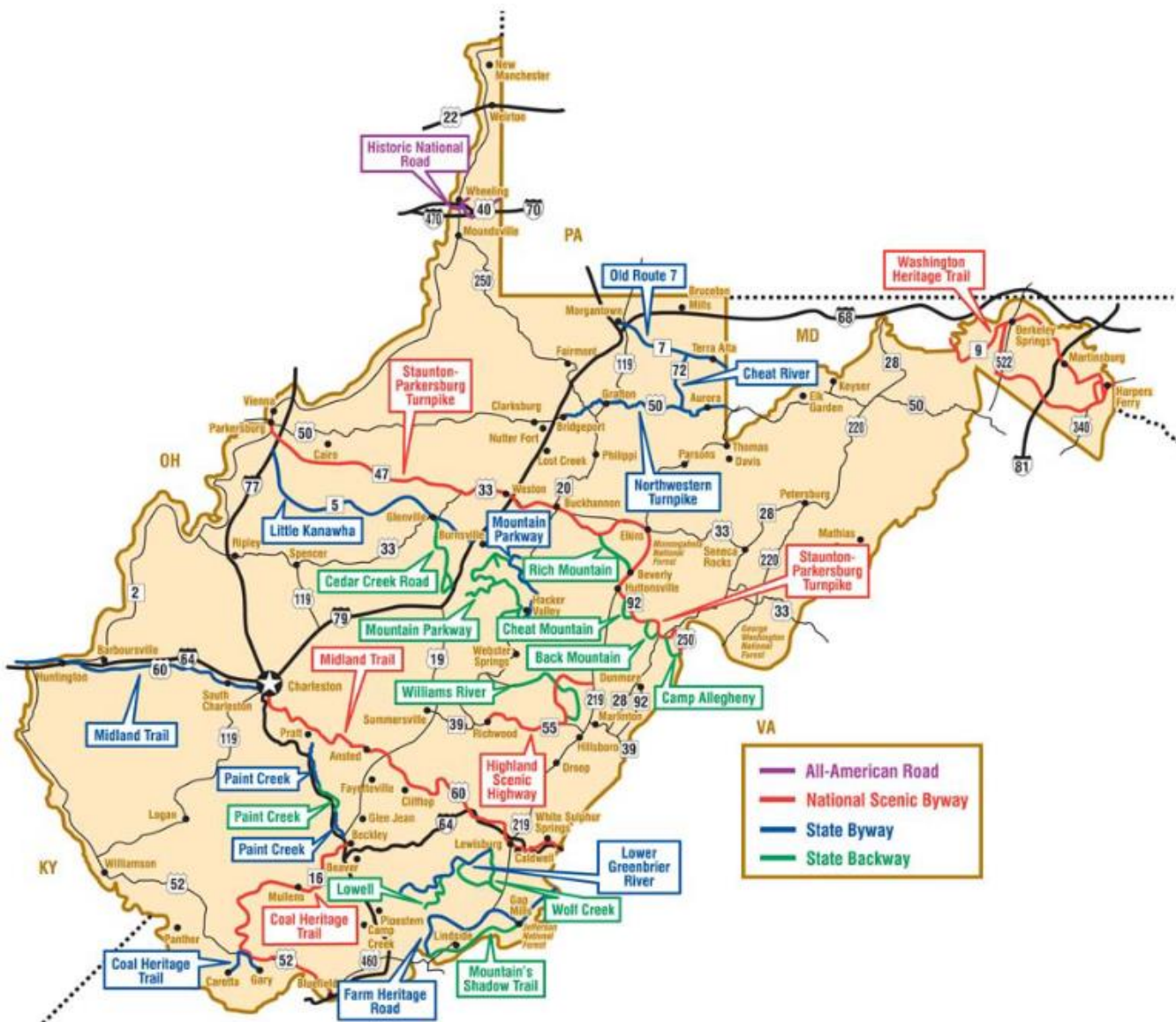


# Olli – Automobiles

Traversing mountains, valleys, wild rivers, and rolling countryside, the roadways maintained by the Division of Highways include:

- 38,770 miles of public roads (2016 Public Certified Mileage)
- 34,691 miles of state owned highways, 835 miles of federally owned roads, and 3,244 miles of municipally owned roads
- 555 miles of State owned Interstate Highway
- 87 miles of West Virginia Turnpike
- 1,988 miles included in the National Highway System.
- 6,958 bridges of which 33 percent are more than 100 feet in length (this figure does not include 238 railroad bridges, 117 city and county bridges, 99 West Virginia Turnpike bridges, 20 state park bridges, two private toll bridges and 132 other non-highway bridges).
- 1 All American Road, 5 National Byways, 14 State Byways and 8 Backways.



## WV BYWAYS AND BACKWAYS

“While most roads in West Virginia are beautiful and fun to drive, these 23 byways and backways were chosen because they offer a unique and picturesque glimpse into the Mountain State’s history and natural beauty. From the largely unpaved backways to state byways to the National Scenic Highways, Heritage Trails and the All-American Historic National Road, these roadways are a slower-paced alternative to frantic Interstate traffic.”



---

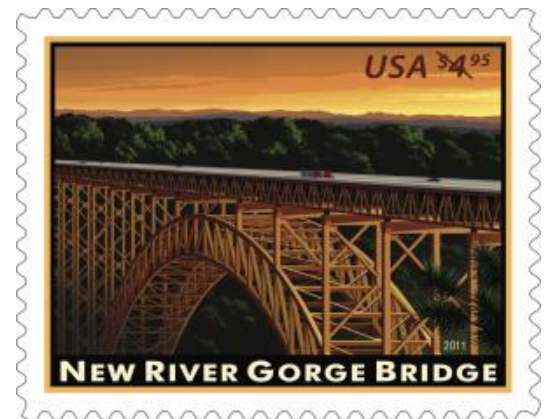
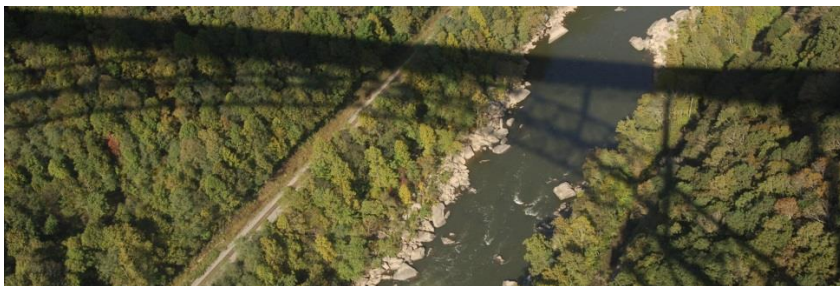
### Wheeling Suspension Bridge - 1856



“First long span wire-cable suspension bridge and longest clear-span bridge built pre Civil War. In Wheeling, WV crosses the Ohio River.”

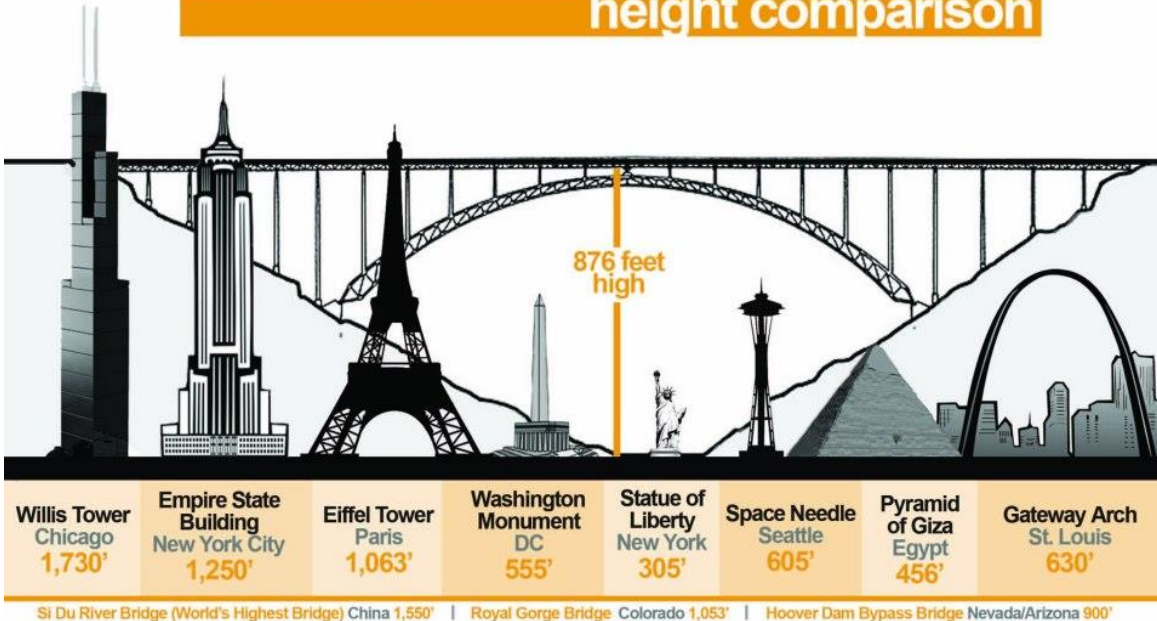


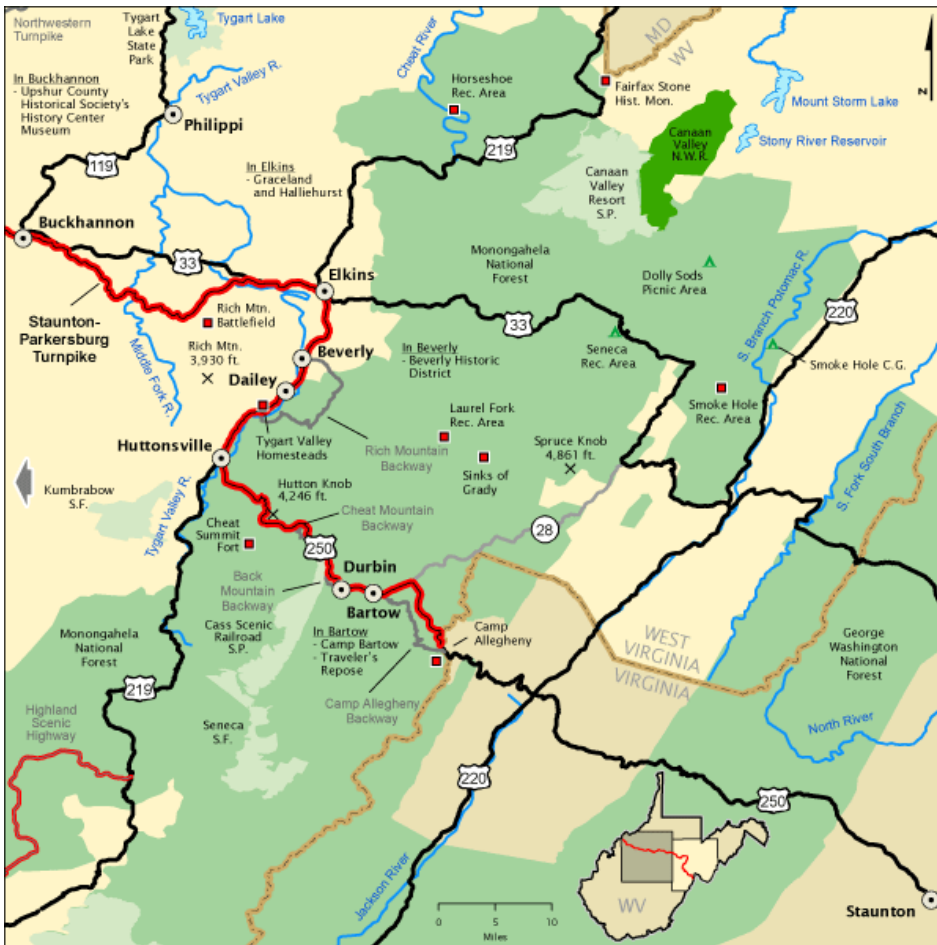
**New River Gorge Bridge - 1977**

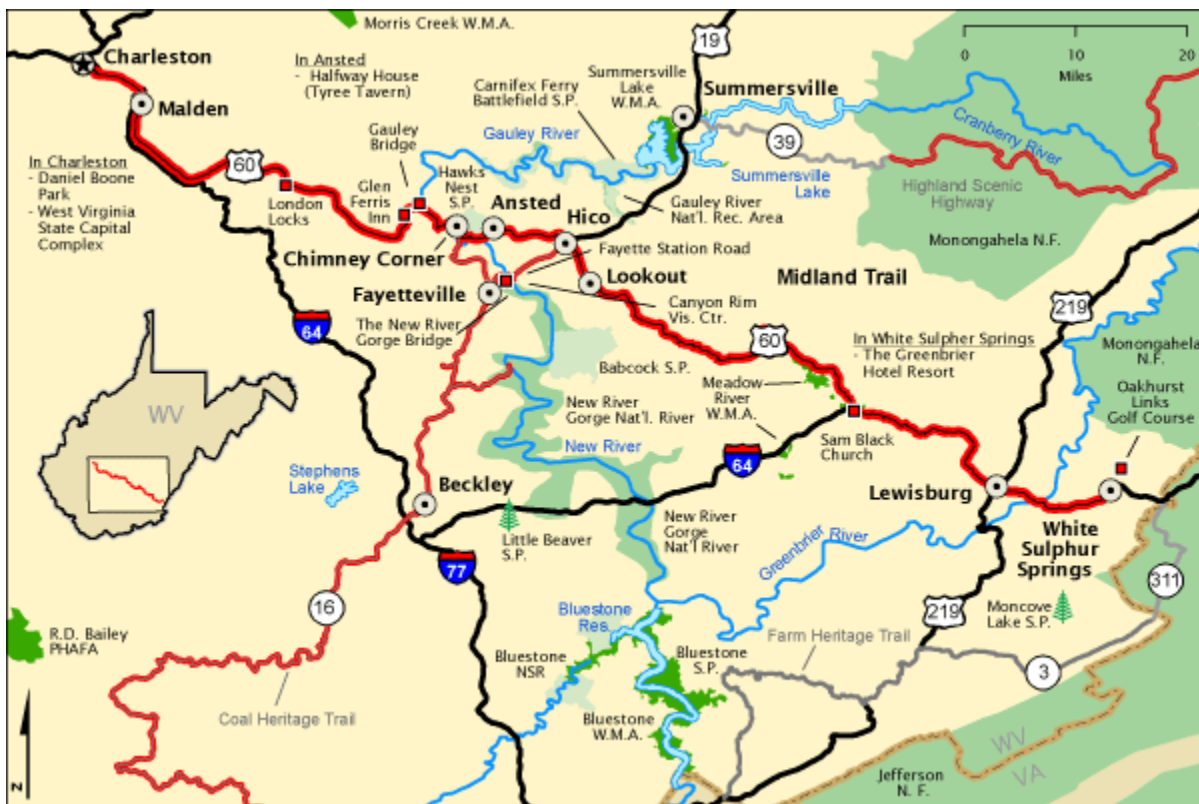


“The bridge is a structure of amazing statistics: 3030 feet long; 876 feet high; 70 feet wide; 88 million pounds of U.S. CorTen steel and American cement; Opened and dedicated on October 22, 1977.”

## NEW RIVER GORGE BRIDGE height comparison







## Appalachian Development Highway System



### **Coalfields Expressway**

The Coalfields Expressway has been designed to serve an area from Interstates 77 and 64 near Beckley southwest through West Virginia to Virginia Route 83 in Buchanan County, VA at Slate. The Expressway will generally follow West Virginia Route 16 through Raleigh and Wyoming Counties, and West Virginia Route 83 in McDowell County. This four-lane highway project, 62 miles long, is now approaching its construction phase.

### **King Coal Highway**

The WVDOH and the Federal Highway Administration propose to construct the King Coal Expressway an approximately 90-mile highway from a point near Williamson – at the intersection of WV 65 and US 119 – to Interstate 77 at its US 52 interchange in the Bluefield area.

The **TOLSIA Highway** is defined as running from I-64 at Kenova to Corridor G (US 119) north of Williamson. Portions of the 66-mile (106 km) highway have been completed

### **US 35**

US 35 is a proposed 4-lane facility from Henderson in Mason County to I-64 in Putnam County. The total length (Ohio to I-64) is approximately 34 miles (18 in Mason County; 16 in Putnam County)

### **North South Appalachia Corridor**

This is a study “to determine the relative costs and social, economic and environmental benefits of transportation improvements in several north-south transportation corridors in Appalachia West Virginia, Maryland, Pennsylvania and northwestern Virginia”. The study corridors extend between Corridor H/I-66 in the south to the Pennsylvania Turnpike in the north. The four corridors studied follow US 219, US 220, US 522 and Interstate 81.